

Go to the website <http://demo.aos.ch>

Log-In with the provided application access credentials and press ENTER

Please start AISv4 application:





The application will be loaded and automatically attaches the available cameras.

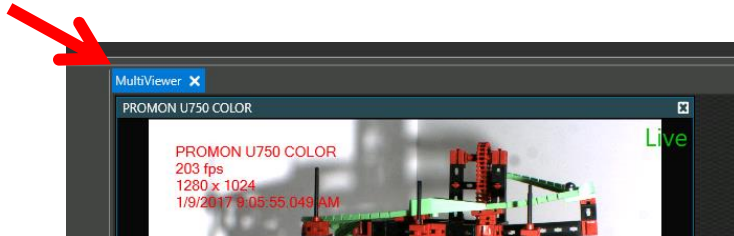
AOS Application Server has his own internet connection in order to ensure the needed speed from our side. Depending on your internet connection and the Firewall / Routing settings the refresh rate could be a problem. If this is the case, there are two options to speed up the transfer speed:

1. Slow down the display refresh rate by adjusting the sliders to 10 or slower rate



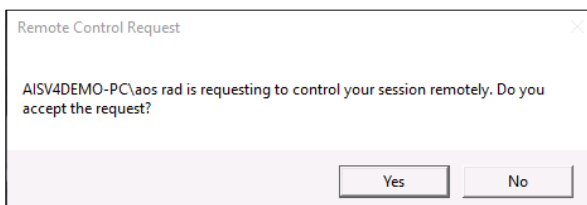
2. Disconnect one of the cameras and close the Multi Viewer

CAMERA	GLOBAL	STATUS	IMAGE FORMAT	EXPOSURE	BUFFER	STATE	CONNECTION
PROMON U750 MONO	<input type="checkbox"/>	Live	1280 x 1024 @ 203 fps	772 us	<div style="width: 100%;"></div>	Buffer 1/1, 10.0 s Device is O.K.	 DISCONNECT
PROMON U750 COLOR	<input type="checkbox"/>	Live	1280 x 1024 @ 203 fps	1804 us	<div style="width: 100%;"></div>	Buffer 1/1, 10.0 s Device is O.K.	 DISCONNECT



We also experienced that the use of a VPN client (if you're connected to a company network) could slow down the application feedback.

If you'll receive remote assistance from a AOS Partner, please press YES if this screens appears:



The session will automatically close after 1h or after 10 minutes of no interaction with the application. If you close the session and reconnect it, the application will be started with his default parameters again, so no worries, you can't damage the system.